



Polymath Science LLC. KMZ Creator

Company: Polymath Science LLC.
Copyright: 2018
Last Update: 1-14-2018
2.0.4

Polymath Science KMZ Creator Software

Last Update 1-14-2018

Written By: Polymath Science LLC

TABLE OF CONTENTS

Use Ctrl+Click to follow these links

Use Ctrl+F to search this document

INTRODUCTION	3
INSTALLATION OF POLYMATH SCIENCE KMZ CREATOR SOFTWARE	3
HOW TO USE THE PROGRAM.....	3
SUBSCRIBING.....	4
ADDING A SUBSCRIPTION.....	4
SOFTWARE	6
LOAD CSV AND SELECT KMZ TYPE	6
OUTPUT TYPE: POINT.....	11
OUTPUT TYPE: LINE.....	11
OUTPUT TYPE: AREA	13
SELECT CSV FIELDS	15
OUTPUT	25
COMPANY SETUP	27
HELP	32
HELP	32
RUN TEAMVIEWER	32
SOFTWARE UPDATE LOG	33
CHECK FOR UPDATES.....	34
REMOVING SUBSCRIPTION	35
ABOUT POLYMATH SCIENCE KMZ CREATOR SOFTWARE.....	36
TROUBLESHOOTING	37
UPDATING USING INTERNET EXPLORER	37
UPDATING USING MICROSOFT EDGE	37
UPDATING USING GOOGLE CHROME	38
UPDATING USING MOZILLA FIREFOX	38
WINDOWS PROTECTED YOUR PC WARNING.....	39
SOFTWARE REQUIREMENTS.....	41

Introduction

This software was designed to create Google Earth KMZ files from CSV files

Installation of Polymath Science KMZ Creator Software

1. Before starting the installation you must ensure an operating system (usually **Windows 7, Windows 8 or Windows 10**) is installed on the computer.
2. Install **KMZ Creator Software** by using the provided setup program. For example: The setup program can be accessed by running D:\PS KMZ Setup V2.0.2.exe if the installation program resided on a CDROM or thumb drive that had the designation D:.
3. This completes the installation of the **Software**.

How to use the program

To begin using the KMZ Creator Software program, click on the desktop icon labeled PSL KMZ Creator. The program will start by default with an interface screen that looks like the image shown in fig. A1.



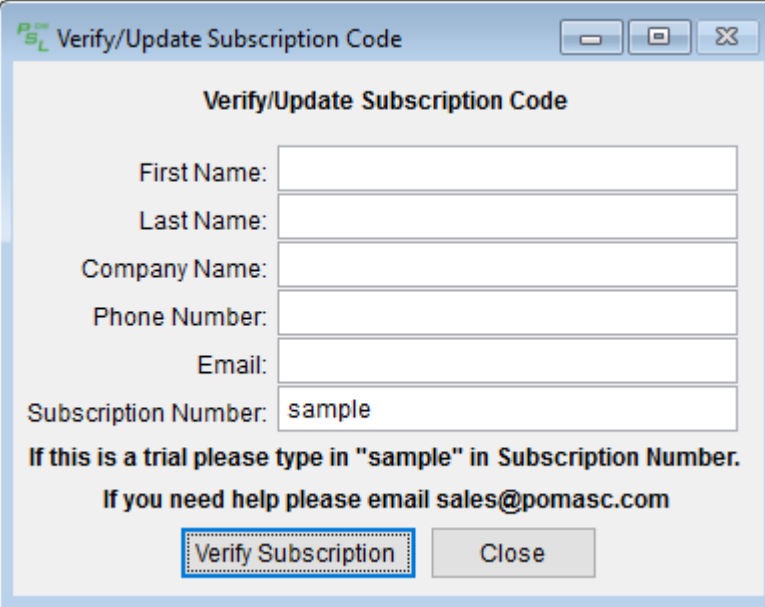
Fig. A1 Start Up Screen

To begin, simply select the “Software” Menu at the upper left of the screen and select the desired option.

Subscribing

Adding a Subscription

Initial running of the software will prompt for subscription information to be entered. All fields must be filled to continue. Sampling of the software can be done by filling all fields and entering “sample” as the “Subscription Number” as displayed in Fig A3.



Verify/Update Subscription Code

Verify/Update Subscription Code

First Name:

Last Name:

Company Name:

Phone Number:

Email:

Subscription Number:

If this is a trial please type in "sample" in Subscription Number.
If you need help please email sales@pomasc.com

Verify Subscription Close

Fig A2: Subscribing - Default

After filling all fields with the user information, click on “Verify Subscription” to complete the subscription process.

Verify/Update Subscription Code

First Name: John

Last Name: Smith

Company Name: Company Name

Phone Number: (123)456-7890

Email: John.Smith@aol.com

Subscription Number: sample

If this is a trial please type in "sample" in Subscription Number.

If you need help please email sales@pomasc.com

Verify Subscription Close

Fig A3: Subscribing– Sample Subscribing

If the subscription number is incorrect or invalid, a message will appear notifying the user.

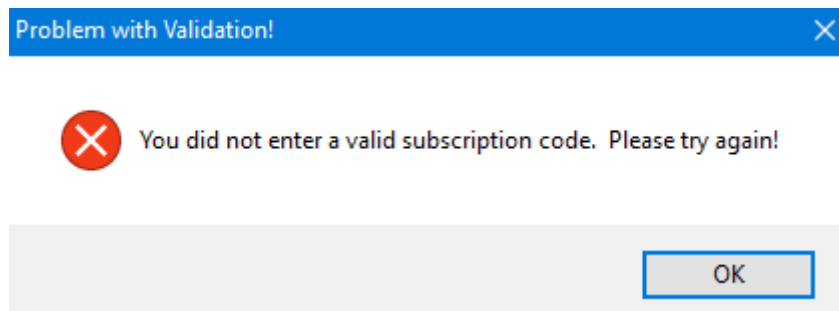


Fig. A4: Subscribing – Invalid Subscription

Once the software has successfully been subscribed, the user will be notified. Software must be restarted at this point to continue with the new subscription.

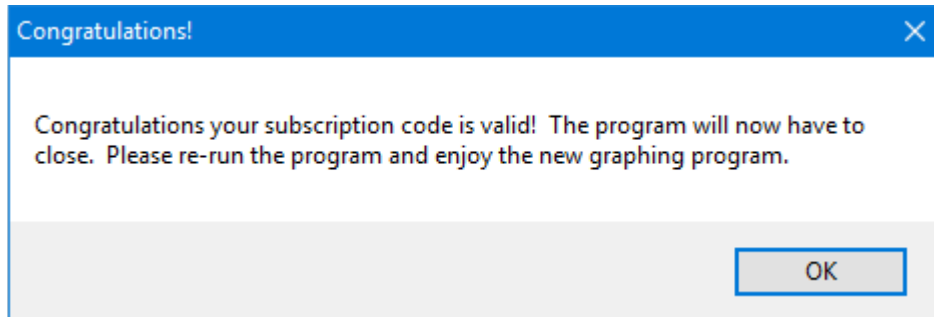


Fig A4: Successful Subscription

Software

All software options are contained in the “Software” section as shown in Fig. B1. Click on one of the options listed below to begin.

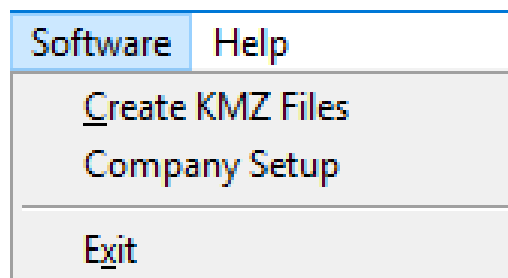


Fig. B1: Software Menu

Load CSV and Select KMZ Type

By default the “Create KMZ Files” menu will be open once the software runs. There are two tabs that can be toggled and are used together to create a KMZ file. The first tab “Load CSV and Select KMZ Type” is used to load a CSV file, select the output type desired, and adjust visual displays on the map display once the KMZ is created.

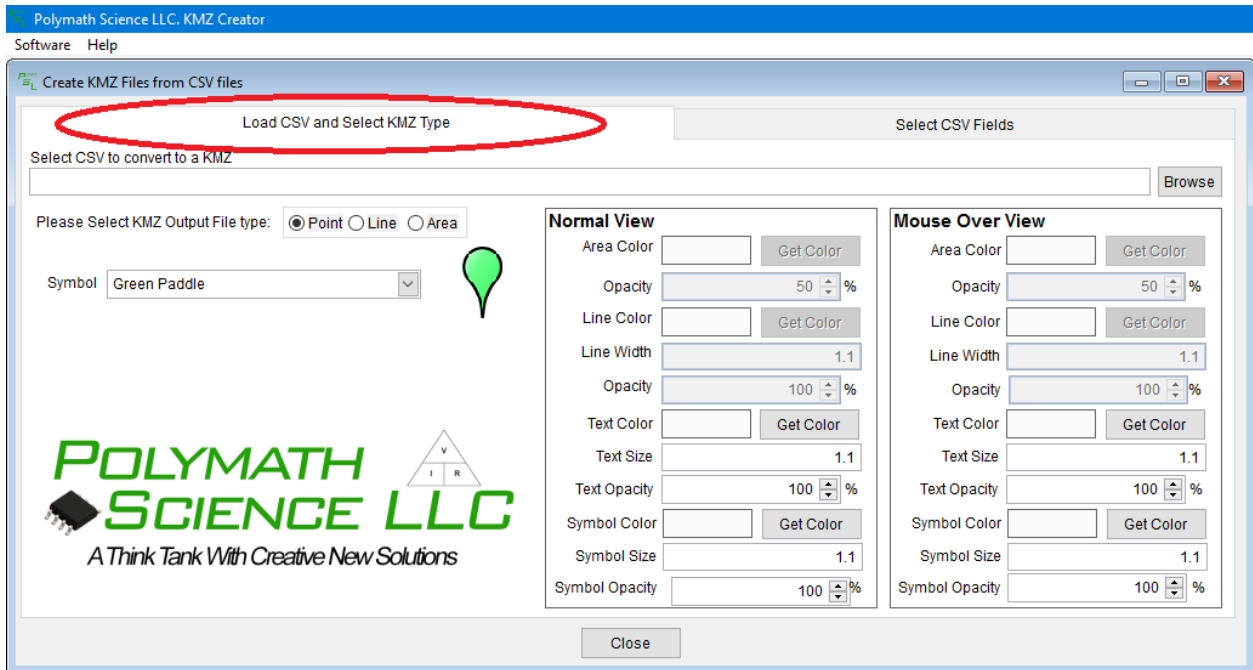


Fig. C1: Create KMZ File – Tab One Navigation

To begin working, a CSV file must be selected utilizing the Browse function as indicated in fig. C2. This will then allow the selection of options for the graphed display. The software contains samples in the “C:\PS_KMZ\Sample” directory. Press the “Browse” button and navigate to the file or choose a sample file.

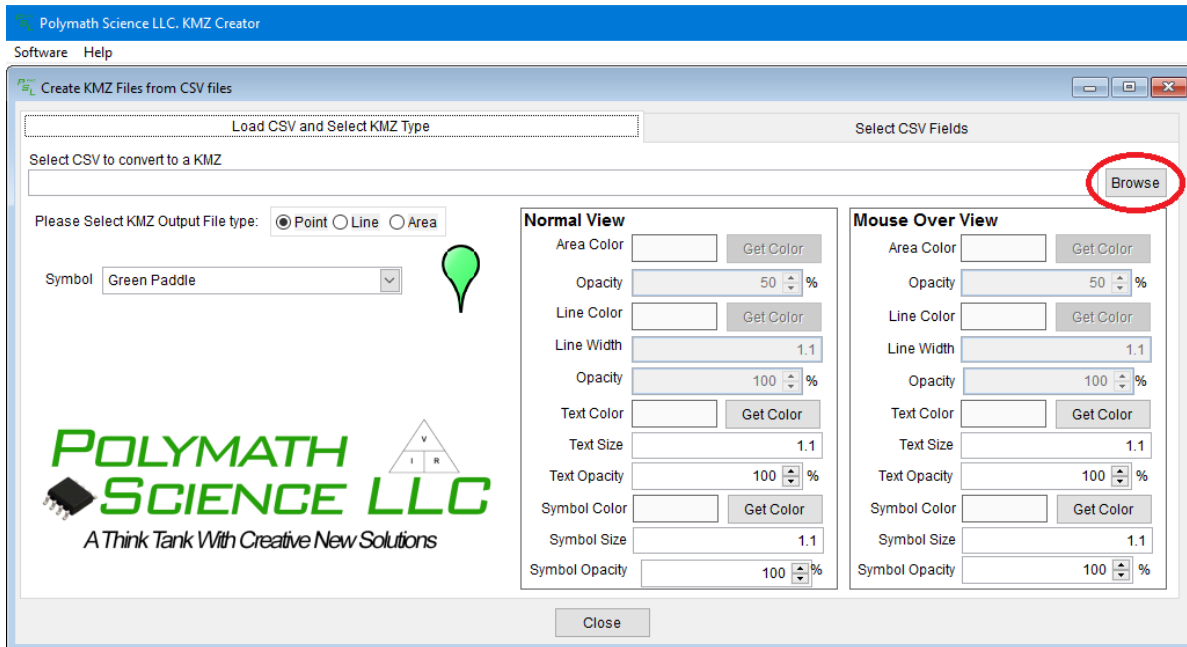


Fig. C2: Create KMZ Files – Browse

With a file selected, the user can select an output type for the KMZ file that will be created. Available options include points displayed on the map, a line connecting points, or an area display. A sample display of these output types is available in “Sample Reports” from the table of contents.

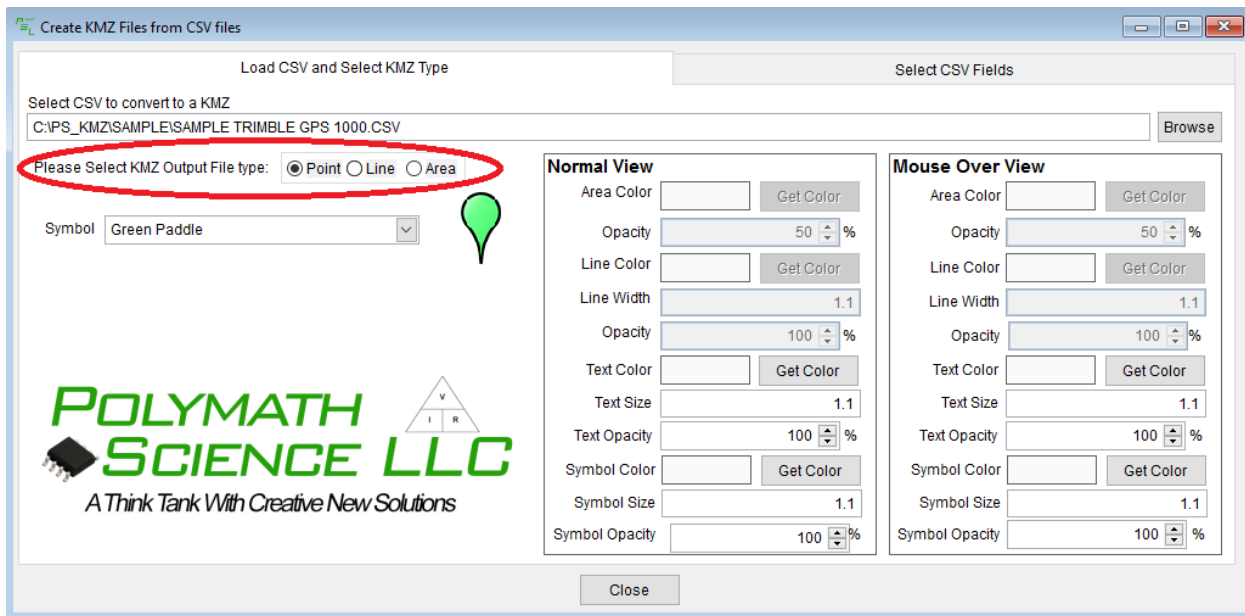


Fig. C4: Create KMZ Files – Output Type

There are two views on the generated KMZ file. The “Normal View” is how the information is displayed when not highlighted. That is, when the mouse pointer is not over a symbol. IMPORTANT: It is important to note that not all options are available to all output types. For example, when output type is set to “Point”, options relevant to “Line” such as “Line Color” will be grayed out and disabled. Only options relevant to the selected output type will be made available. To edit the normal view, manipulate available options under the “Normal View” header as shown in figure C5 as desired.

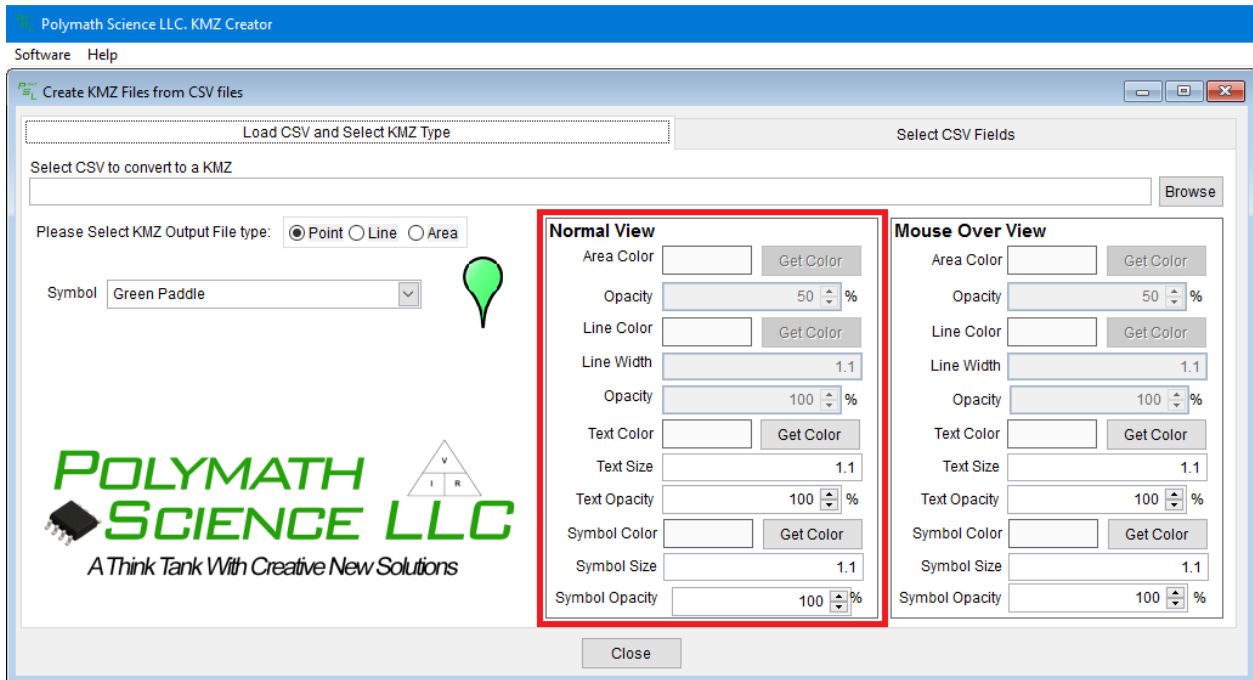


Fig. C5: Creation of KMZ Files – Normal View Menu



Fig. C6: Create KMZ File – Example Normal View with Points

The second available view is the “Mouse Over View”. This view is displayed when the mouse pointer hovers over a symbol. This allows for easily observing the location of the symbol the user is interacting with. To edit this view, navigate to the menu with the header “Mouse Over View” as shown in C7, and edit available settings as desired.

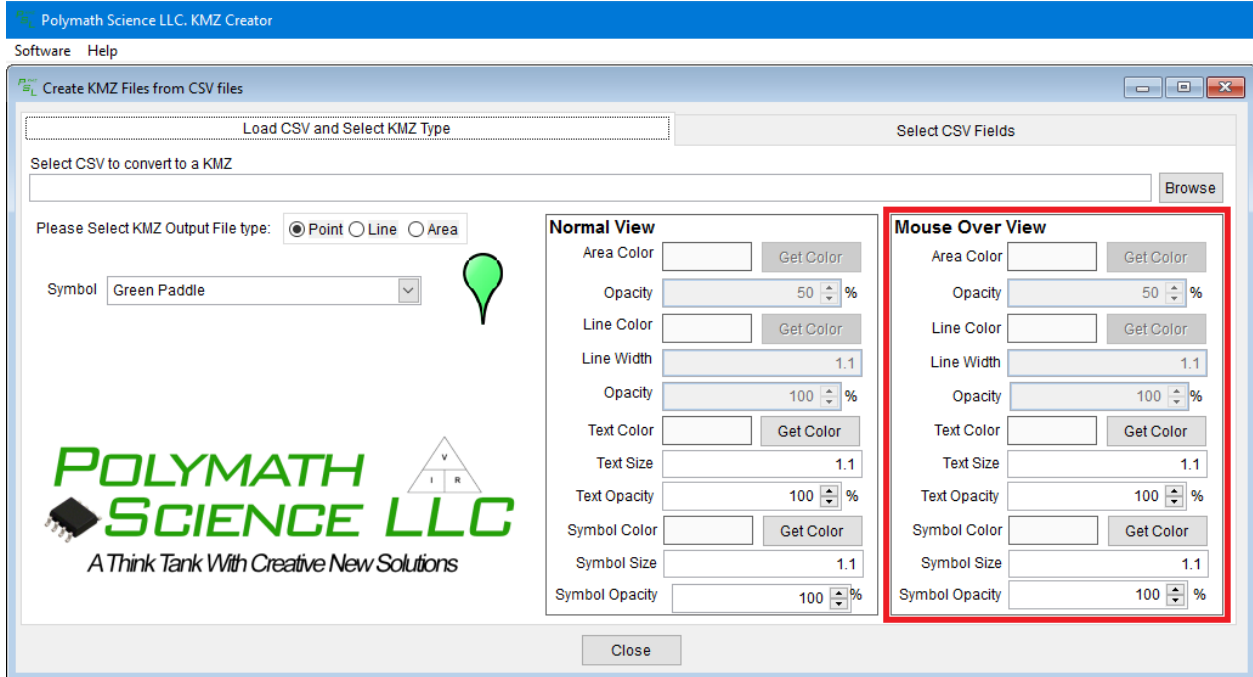


Fig. C7: Creation of KMZ Files – Mouse Over View Menu

An example of a mouse over view with “Symbol Size” set to 2.1, and Symbol Color set to blue is displayed below in figure C8.

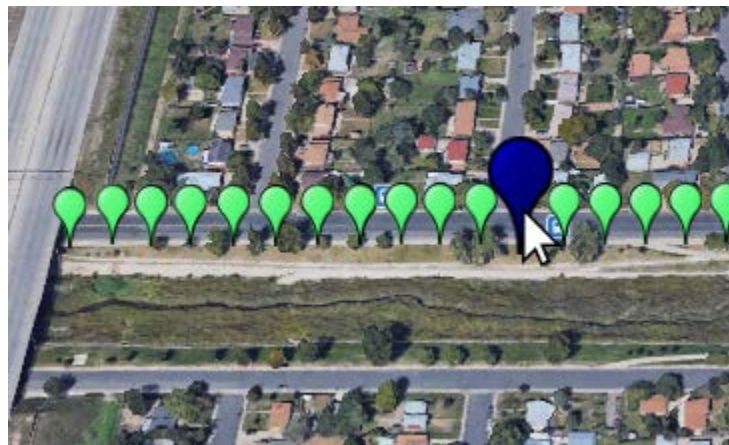


Fig. C8: Creation of KMZ Files – Example Mouse Over View with Points

Output Type: Point

When the output type is set to “Point”, the generated KMZ file will display markers at each point viewable on the map. To change the shape of each marker, click the downward facing arrow, circled in figure C9, with the “Symbol” header. Click an option to select a symbol. A preview is made available next to the selection box.

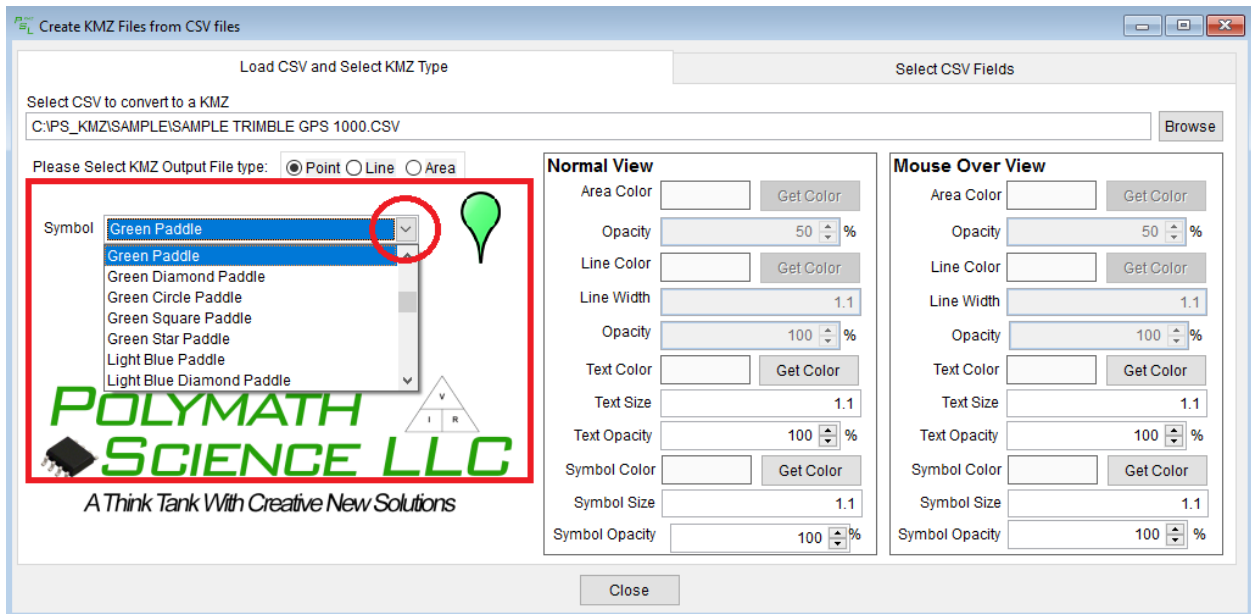


Fig. C9: Create KMZ Files – Point Symbol Type

Selecting “Point” as the output type allows for editing the following fields in “Normal View” and “Mouse Over View”

- Text Color
- Text Size
- Text Opacity
- Symbol Color
- Symbol Size
- Symbol Opacity

Output Type: Line

When the output type is set to “Line” the generated KMZ file will contain a line viewable on the map connecting data points. To select Line as the output type, click the bubble next to “Line” as indicated in figure C10.

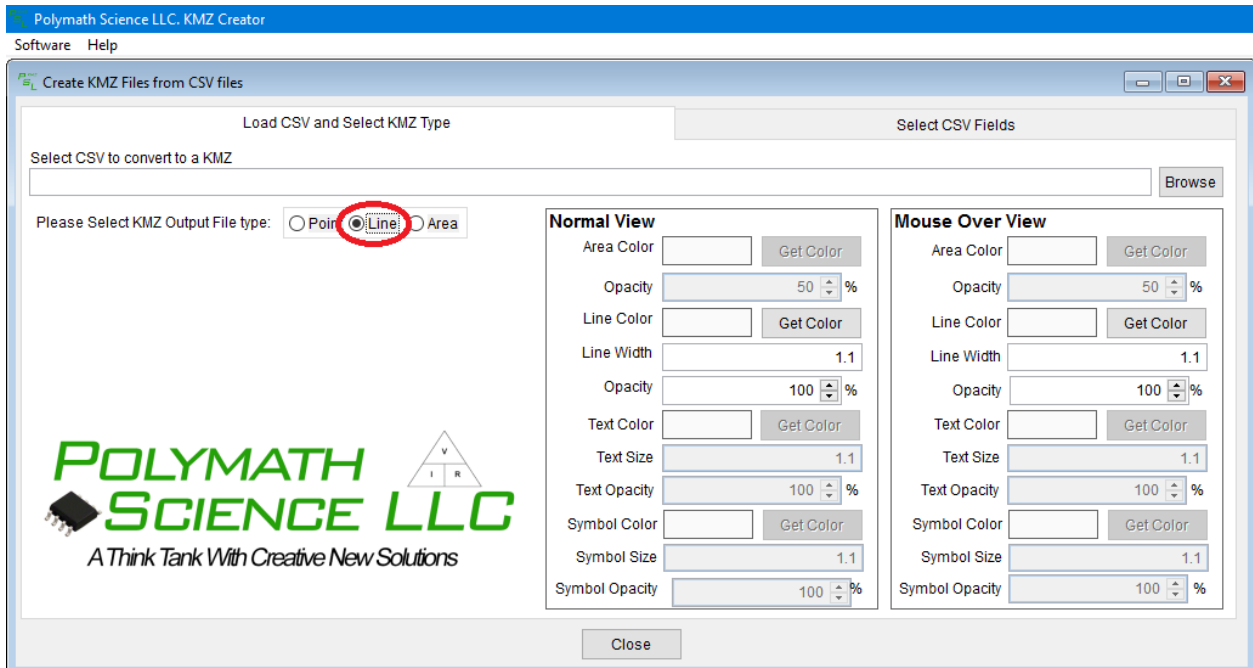


Fig. C10: Create KMZ Files – Selecting Output Type: Line



Fig. C11: Create KMZ Files – Output Type: Line

Selecting “Line” as the output type allows for editing the following fields in “Normal View” and “Mouse Over View”

- Line Color
- Line Width
- (Line) Opacity

Output Type: Area

Selecting “Area” as the output type allows for displaying a set area around each data point. In addition, the shape of the area, as well as the size is adjustable. To select area, click the bubble next to “Area”.

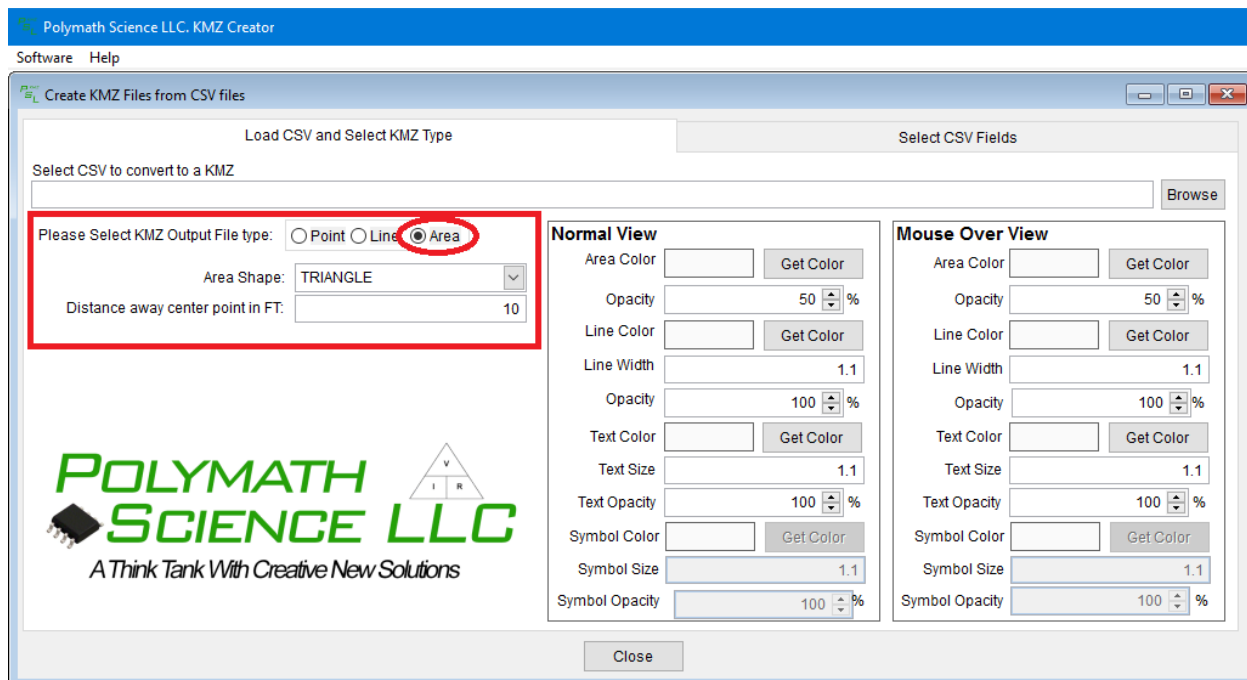


Fig. C12: Create KMZ File – Selecting Output Type: Area

Changing the shape of the area display is done by clicking the downward facing arrow next to the box with the label “Area Shape”. Clicking on a new shape type will select it.

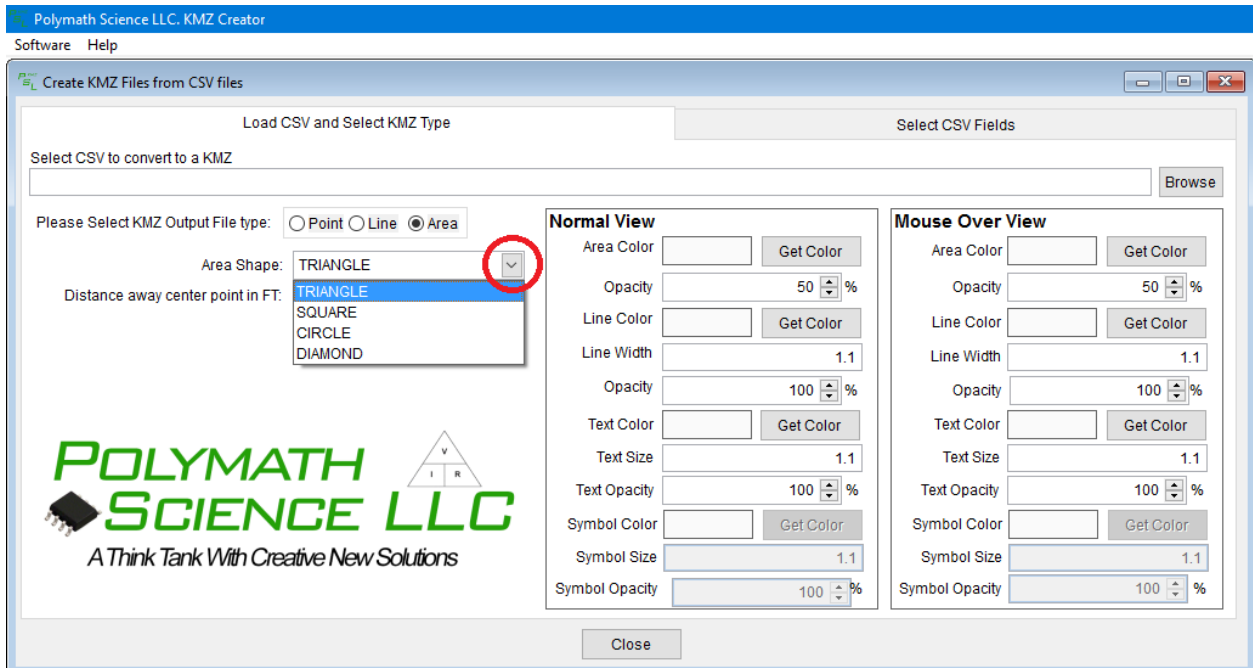


Fig. C13: Create KMZ File – Selecting Area Shape

Adjusting the size of the area shape is done by editing the textbox labeled “Distance Away Center Point in FT”. This value is the distance from the center of the data point to the edge, and is measured in feet. By default this value is set to 10.

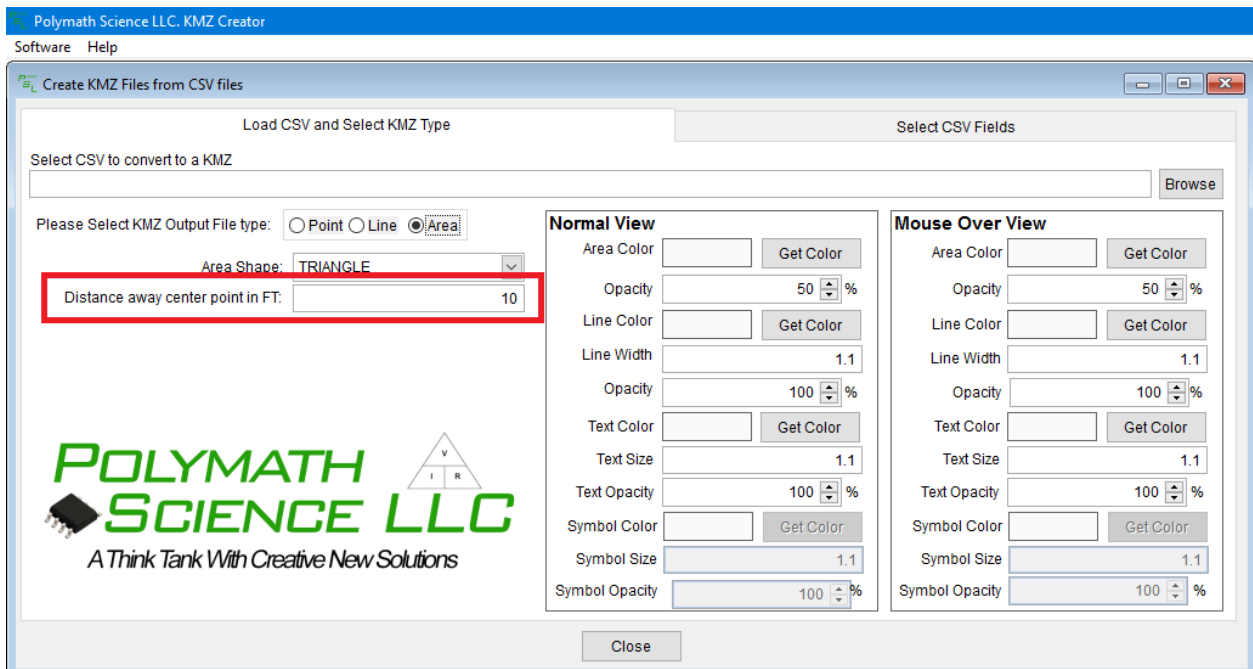


Figure C14: Create KMZ File – Distance from Center

An example of a triangle area shape and distance away from center point set to 50 is displayed below in figure C15.

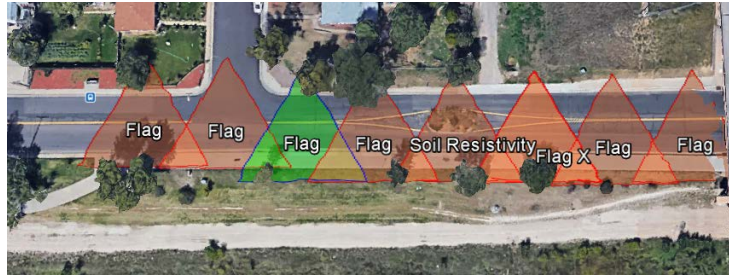


Fig C15: Create KMZ File – Example Area Display

Selecting “Area” as the output type allows for editing the following fields in “Normal View” and “Mouse Over View”

- Area Color
- (Area) Opacity
- Line Color
- Line Width
- (Line) Opacity
- Text Color
- Text Size
- Text Opacity

Select CSV Fields

Once the CSV file is loaded, the user must inform the software where certain information is located. This information includes which columns contain specific information.

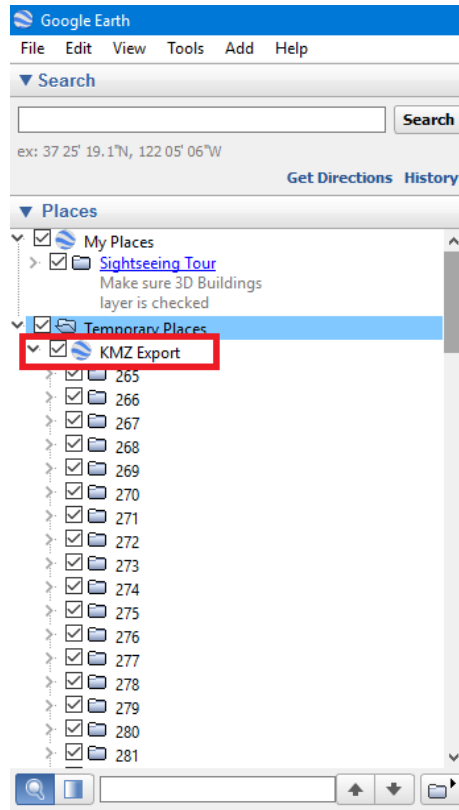


Fig. D3: Select CSV Fields – Label for KMZ Legend in Google Earth

With a CSV file selected from the “Load CSV and Select KMZ Type” tab, the table will be populated. Set what each column represents by editing the boxes in the highlighted area shown in figure D4.

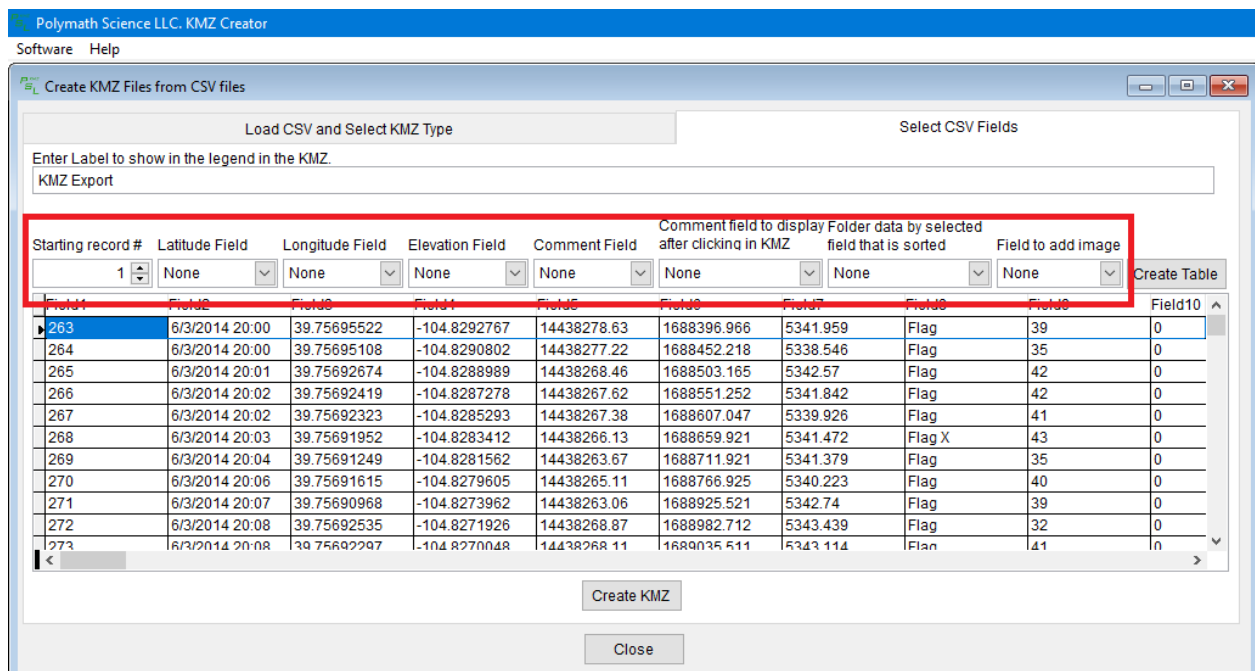


Fig. D4: Select CSV File – Field Location

When selecting the fields for each box, if the information is not present, set the value to the default “None” selection. An explanation of each box is given below.

- **Starting Record #:** This value represents the record number that the data will begin drawing from.
- **Latitude Field:** The field selected should be the column of information containing the latitude values for each record.
- **Longitude Field:** The field selected should be the column of information containing the longitude values for each record.
- **Elevation Field:** The field selected should be the column of information containing the elevation values for each record.
- **Comment Field:** The field selected should be the column with any notes or comments made for records. These comments will be shown for each record on the map.
- **Comment Field to Display after Clicking on the KMZ:** The field selected should be the column with any notes or comments made for records. These comments will be shown for each record when clicked.
- **Folder Data by Selected Field that is Sorted:** The field selected should be the column that is desired to be used to sort the data which is displayed in a folder in Google Maps. For example, if the field containing records in order are selected, the folder will display the records in the same order with available information.

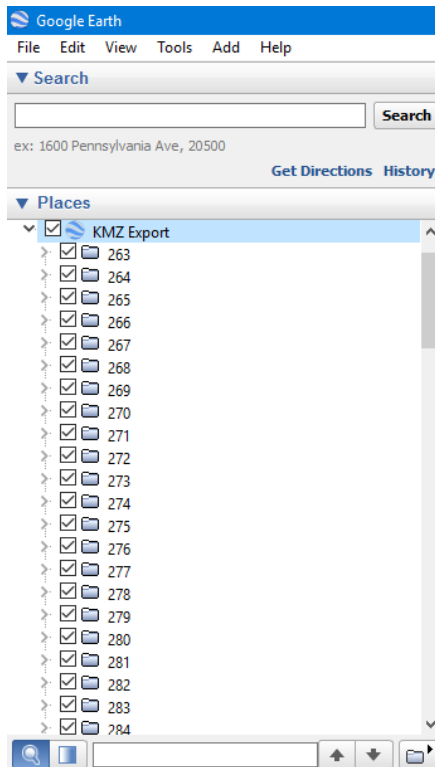


Fig. D5: Select CSV File – Folder Sorted by Selected Field

- Field to Add Image: This field should contain the column with any images that the user would want included for the given record.

Set the starting record by typing in the desired position in the “Starting Record #” box, or by using the up and down facing arrows to increase or decrease the value, shown in figure D6.

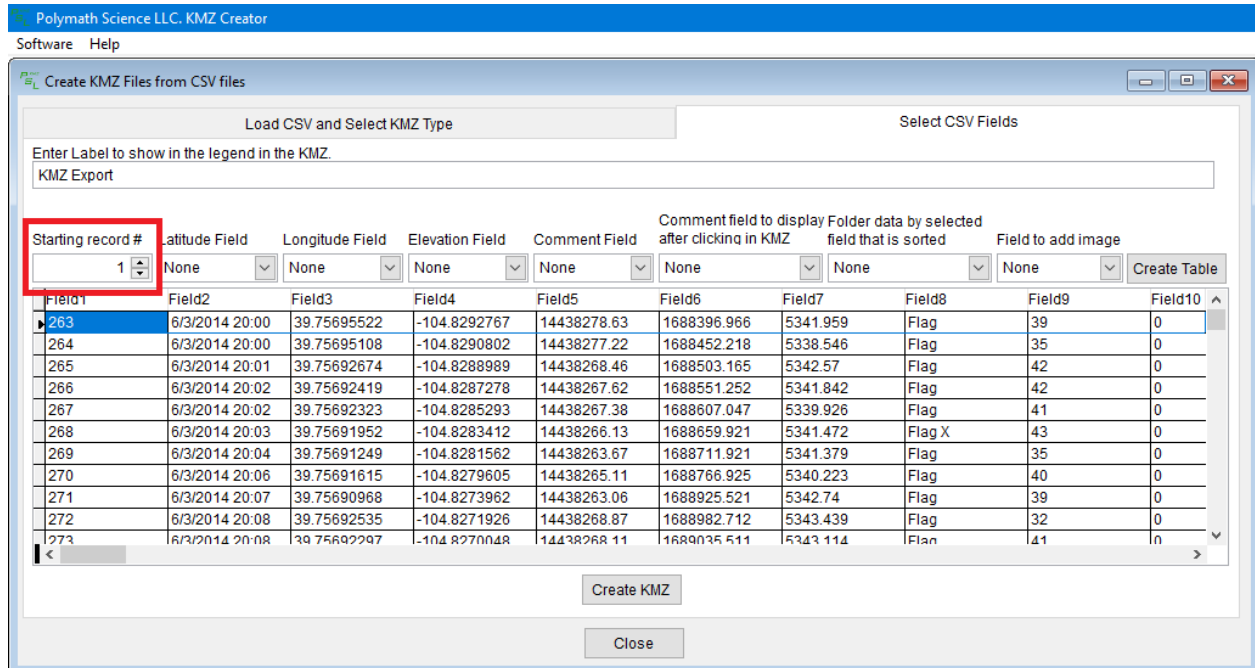


Fig. D6: Select CSV File – Starting Record

Set the location of the information needed in the area highlighted in figure D4 by clicking the downward facing arrow on each box. Clicking a Field value will select it. This process is demonstrated in figure D7.

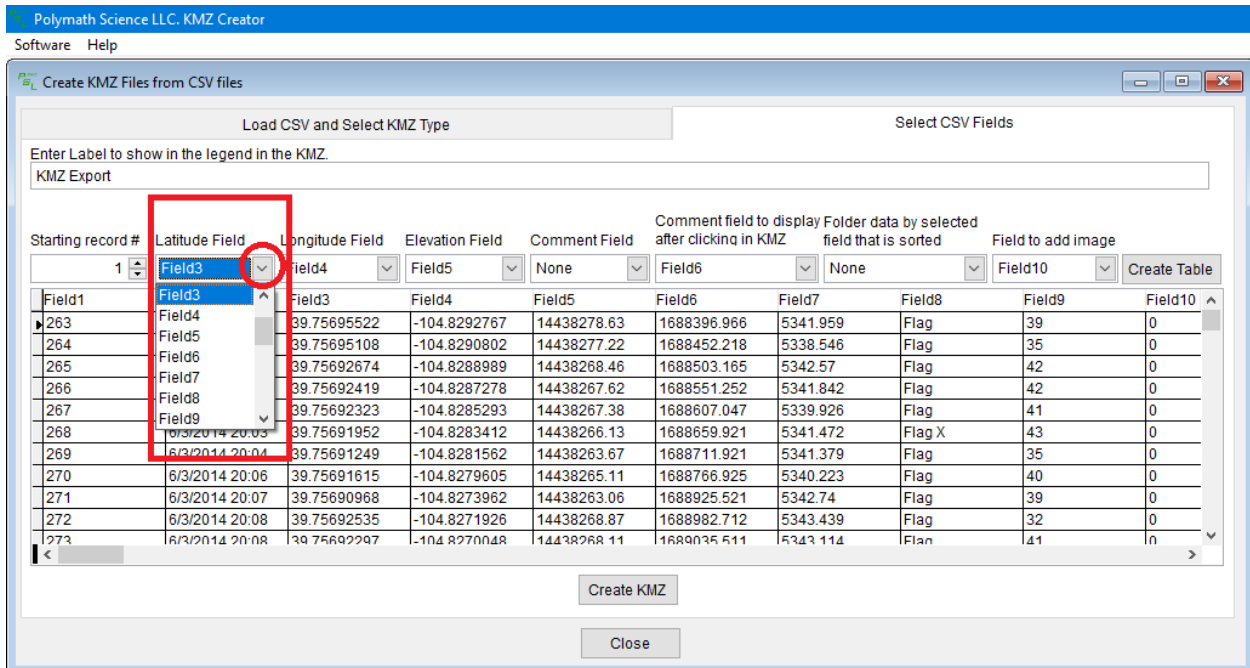


Fig D7: Select CSV Fields – Field Selection

To view information at a glance for a given point when clicking it on the map, a custom table can be created. The user can provide custom labels and select a column to reference to get the information from. An example table is displayed below in figure D8.



Flag

1689539.452

Station	Date	Latitude	Longitude
282	6/3/2014 20:12	39.75692289	-104.8252116

Lat: 39.75692289 Long: -104.8252116 Elev: 14438269.06

*YOUR COMPANY
NAME HERE*

Your Company Name Here
1234 Any Street
Any Town, MI 48801
800-555-1110
Links: <http://www.pomasc.com>

Software Created By: Polymath Science, LLC
Links: www.pomasc.com

Directions: [To here](#) - [From here](#)

Fig. D8 Select CSV Fields – Custom Table Display

To begin creating a custom table, click “Create Table”.

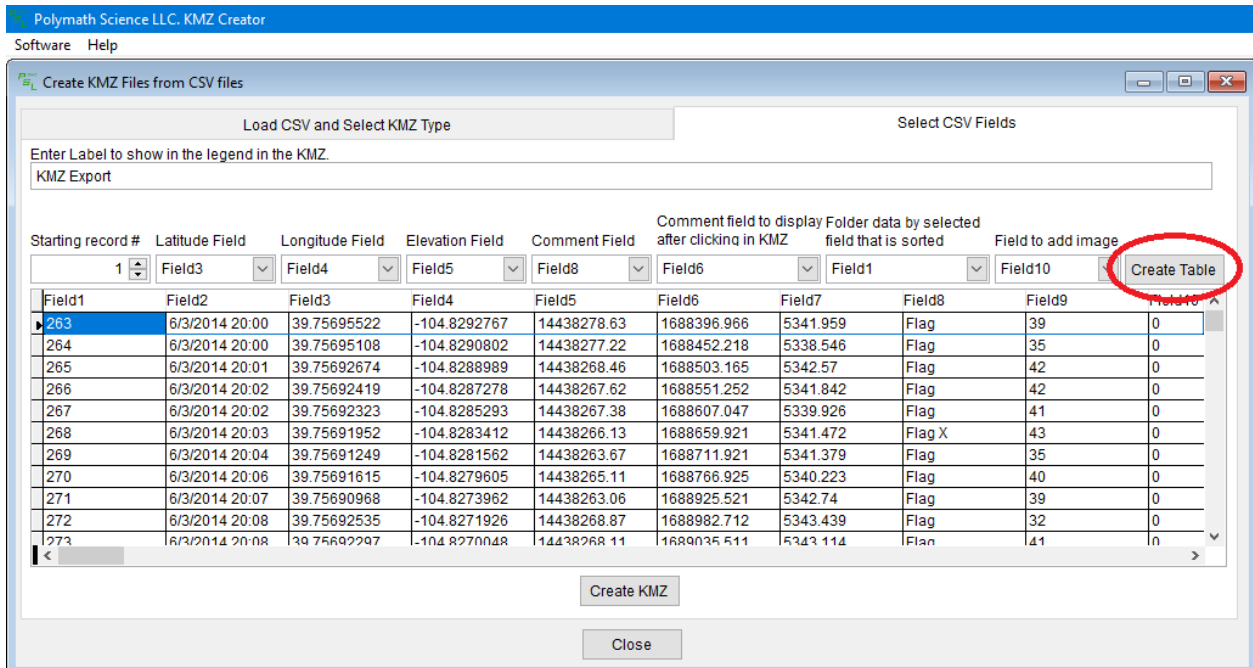


Fig D9: Select CSV Fields – Create Table

The previous fields will be replaced with new fields that represent the information for the table. No previous data is lost, and the two views can be toggled by clicking “Done” and “Create Table”. Set the number of columns by typing in the highlighted box or by clicking the upward or downward facing arrows to increment or decrement respectively.

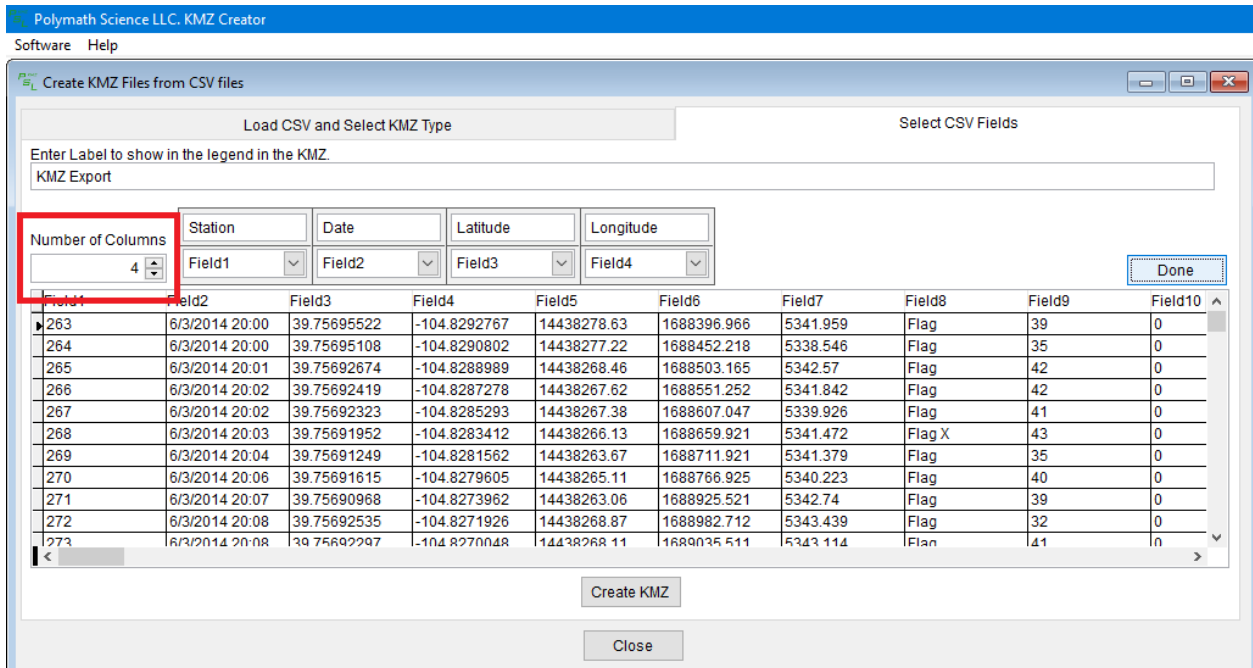


Fig D10: Select CSV Fields – Set Number of Columns

Each column can be given a custom label. Type the label desired into the circled area as demonstrated in figure D11.

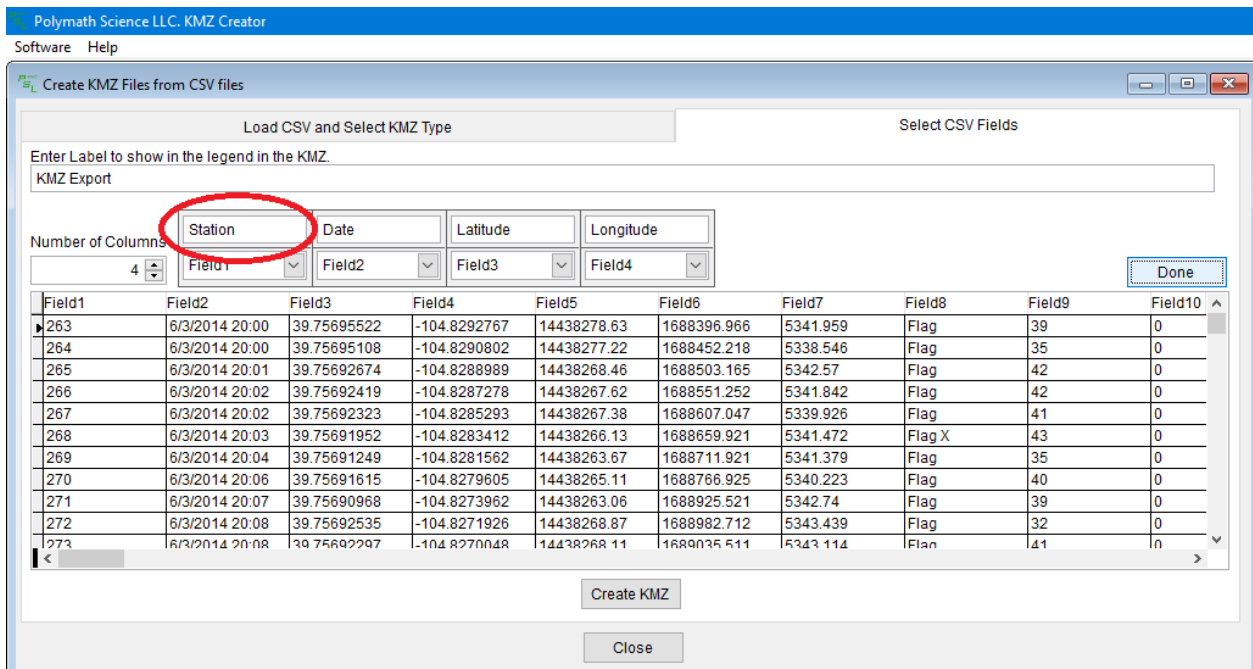


Fig D11: Select CSV Fields – Table Labels

To select the column that represents the label, click the downward facing arrow below the label as shown in figure D12.

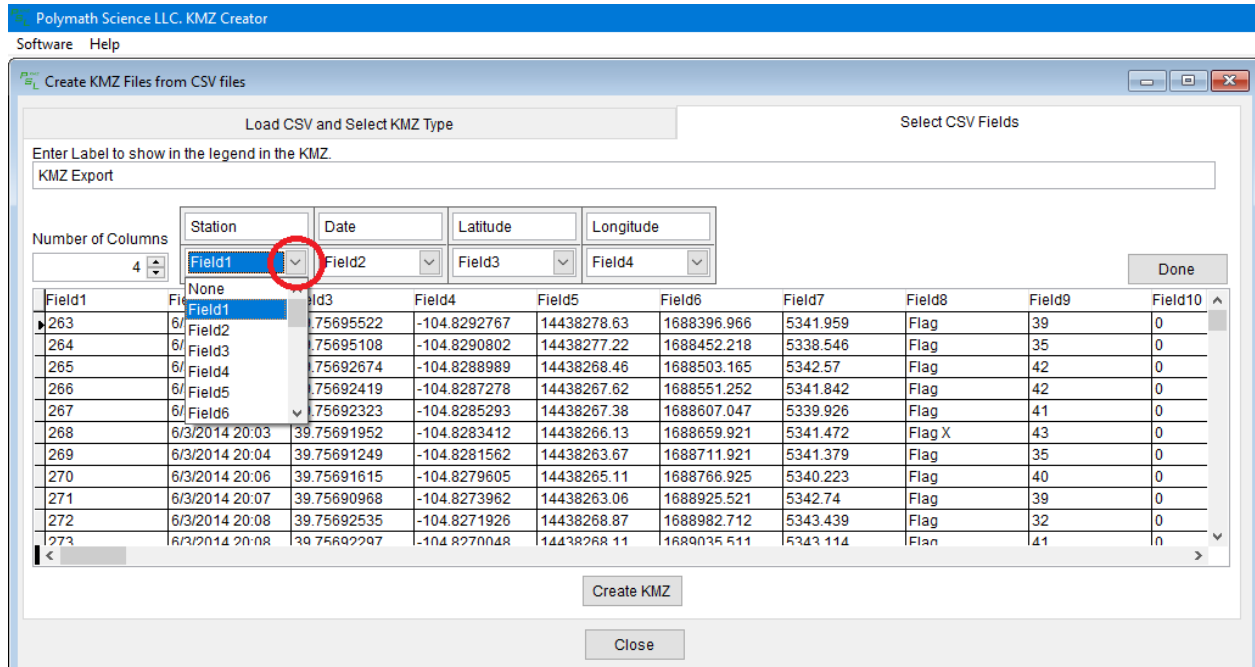


Fig D12: Select CSV Fields – Select Fields

Once all labels and fields are selected, click “Done” to return to the previous screen if needed. If finished click “Create KMZ” to finalize the process and complete the KMZ file.

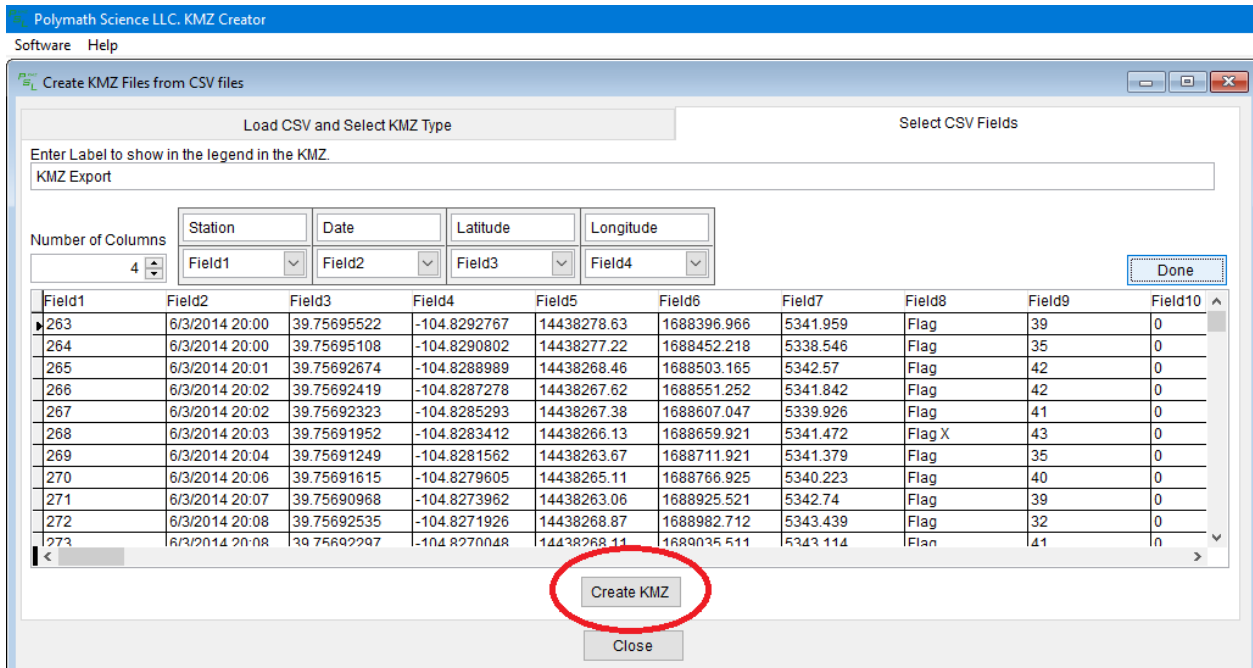


Fig D13: Select CSV Fields – Create KMZ

Output

Once the user clicks the “Create KMZ” button, the software will begin creating the KMZ file. The filename will match that of the CSV file used, but will contain the .kmz extension. If the name exists, a prompt will appear asking the user what action to take. Selecting “Yes” will replace the old file with the new one being created. Selecting “No” will prompt the user to enter a new filename.

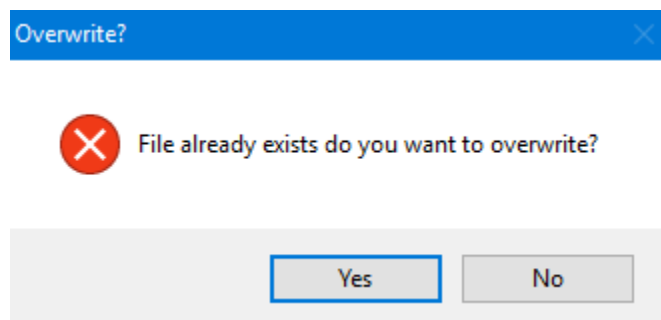


Fig. E1: Output – File Exists

When selecting not to overwrite, the prompt as in figure E2 will show. Edit the filename and select “OK” as shown in figure E3..

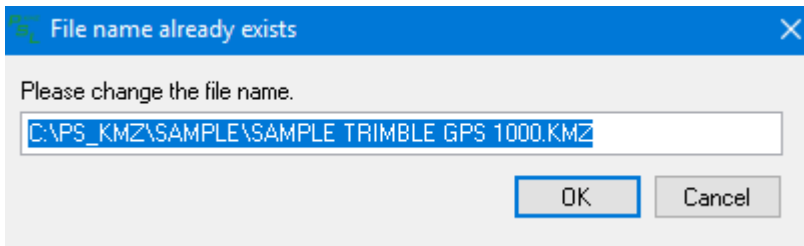


Fig. E2: Output – New Filename Prompt

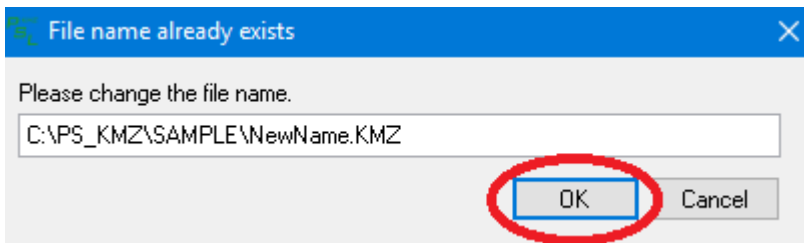


Fig. E3: Output – New Filename

Loading the created KMZ file will open Google Earth and zoom into the area of the records.

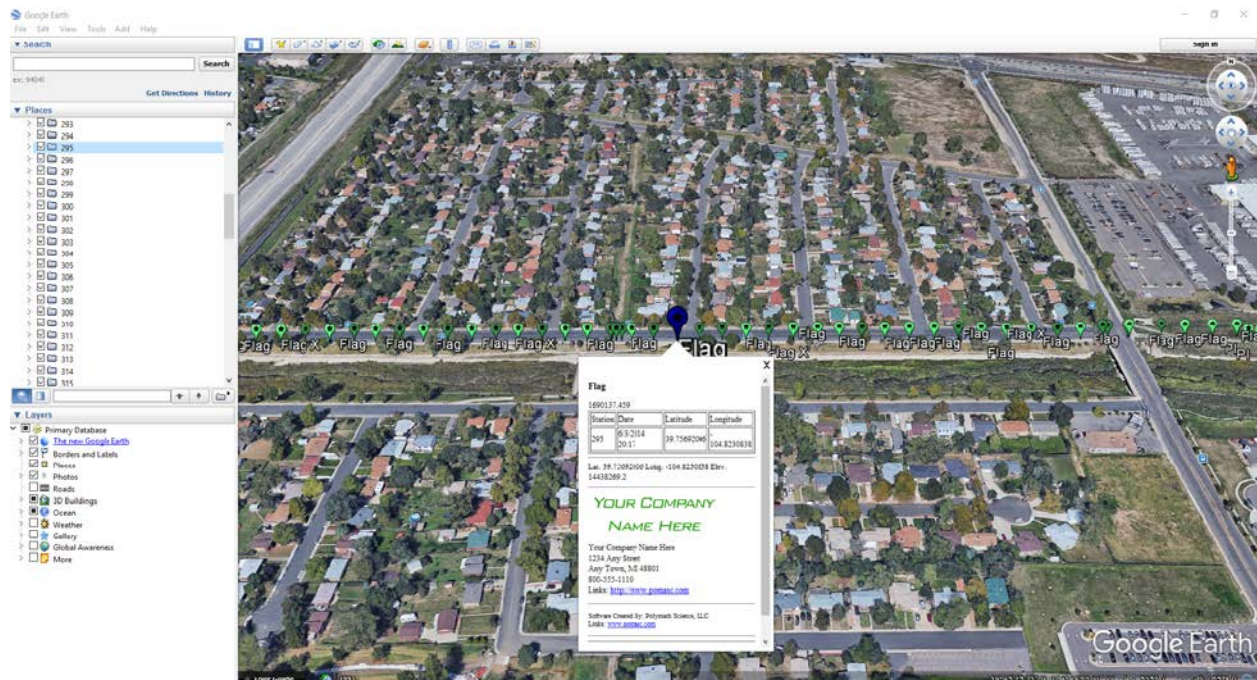


Fig. E4: Output – KMZ Overview

Company Setup

This portion of the software allows the user to set up the company's name, address and contact information. This data is used throughout the software in all the reports and in the KMZ files that are created. The software installs with default pre-set company information.

From the "Software" menu at the top left of the screen select the menu entry labeled "Company Setup" as shown in fig. F1

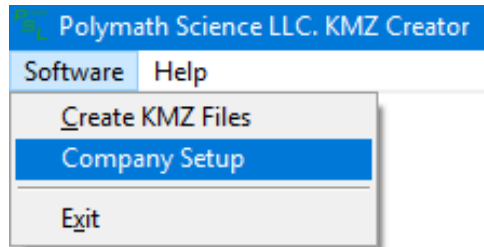


Fig. F1: Software – Company Setup

By selecting the "Company Setup" menu item, a new window will be opened to allow the user to edit the Company Information as shown in fig. F2.

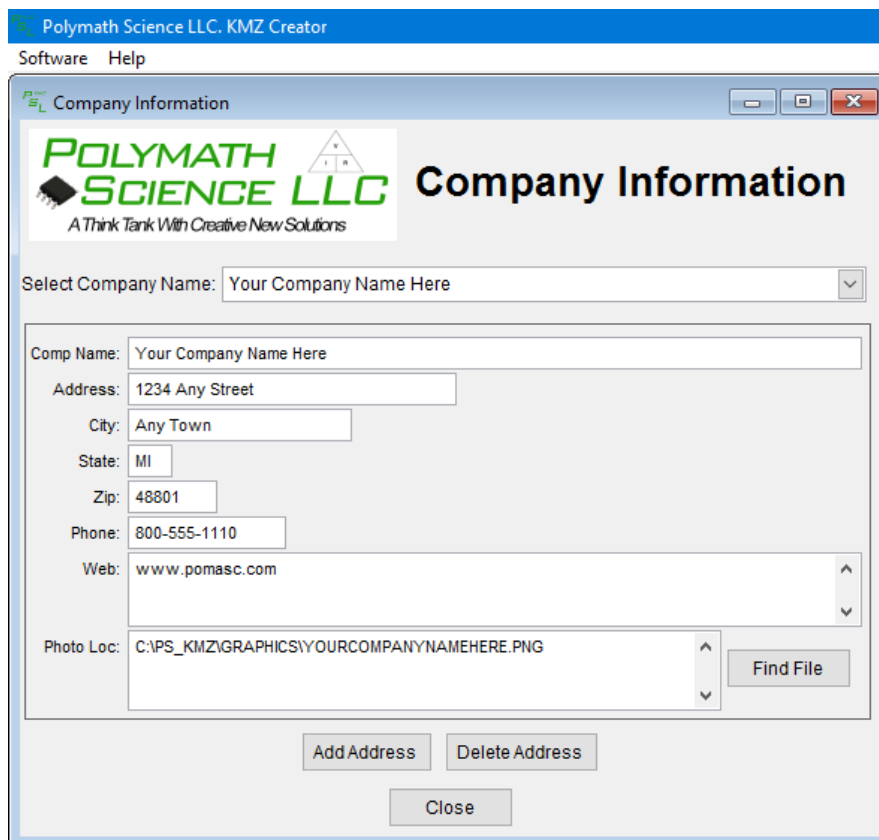


Fig. F2: Software – Default Company Setup

To edit the information simply type in the field associated with the attribute to be changed. When complete, click “Add Address” to save the data under a company name.

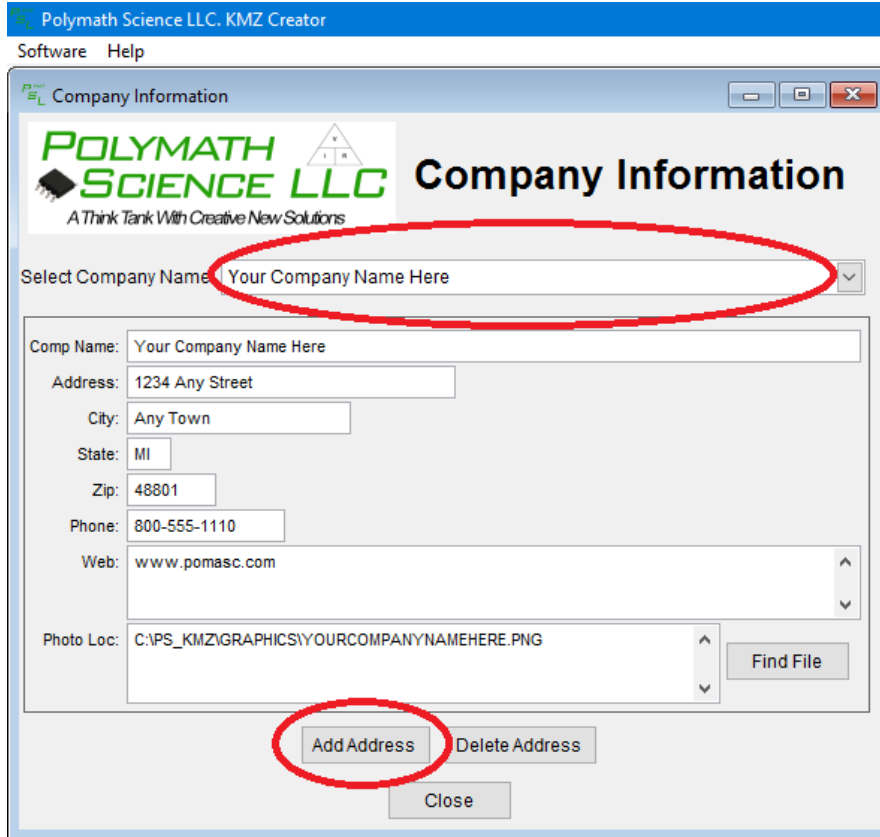


Fig. F3: Software – Add Company

Saved company names can be found by clicking the downward facing arrow labeled “Select Company Name” as shown in figure F3.

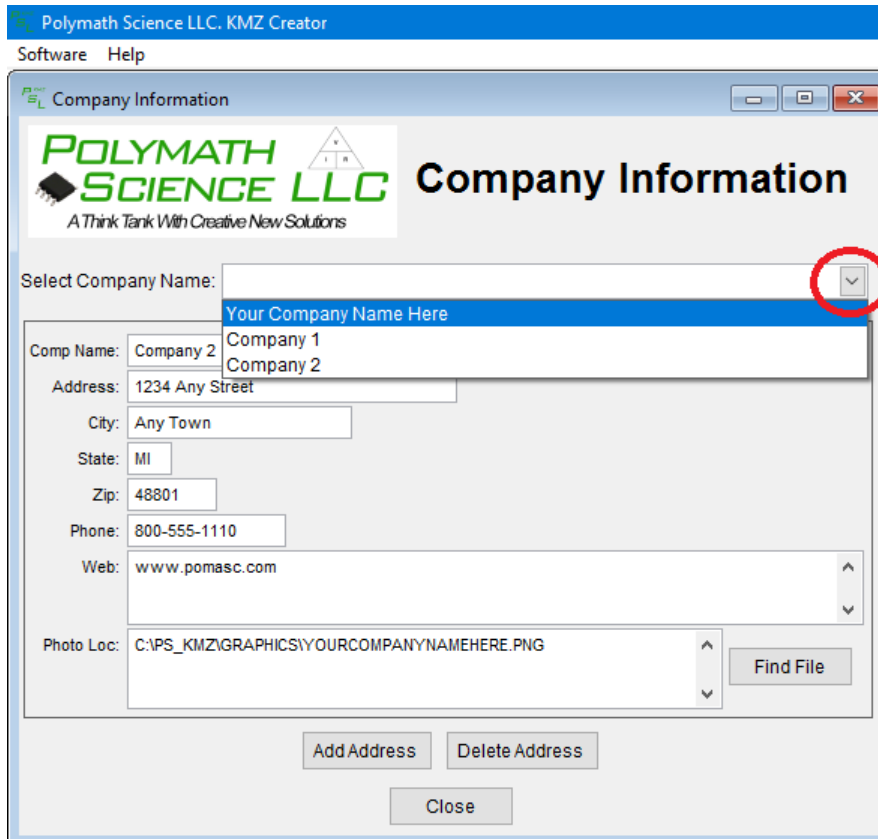


Fig. F4: Software – Select Company

When a company name is selected, the saved company can be deleted by clicking “Delete Address” with the company selected.

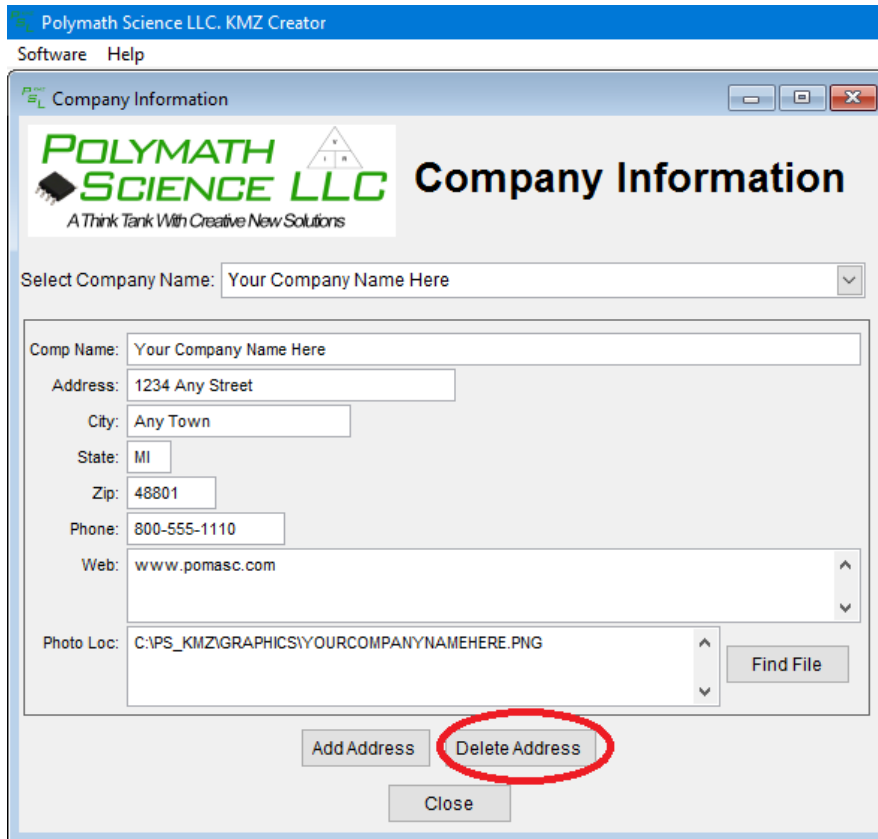


Fig. F5: Software – Delete Company

The last option allows for the inclusion of a company photo. To use the picture, click “Find File” and select the desired image. This image is displayed in the KMZ file when a point is clicked. The software scales the photo to fill in the space on the report, so the user may have to re-size the photo to ensure good printing quality.

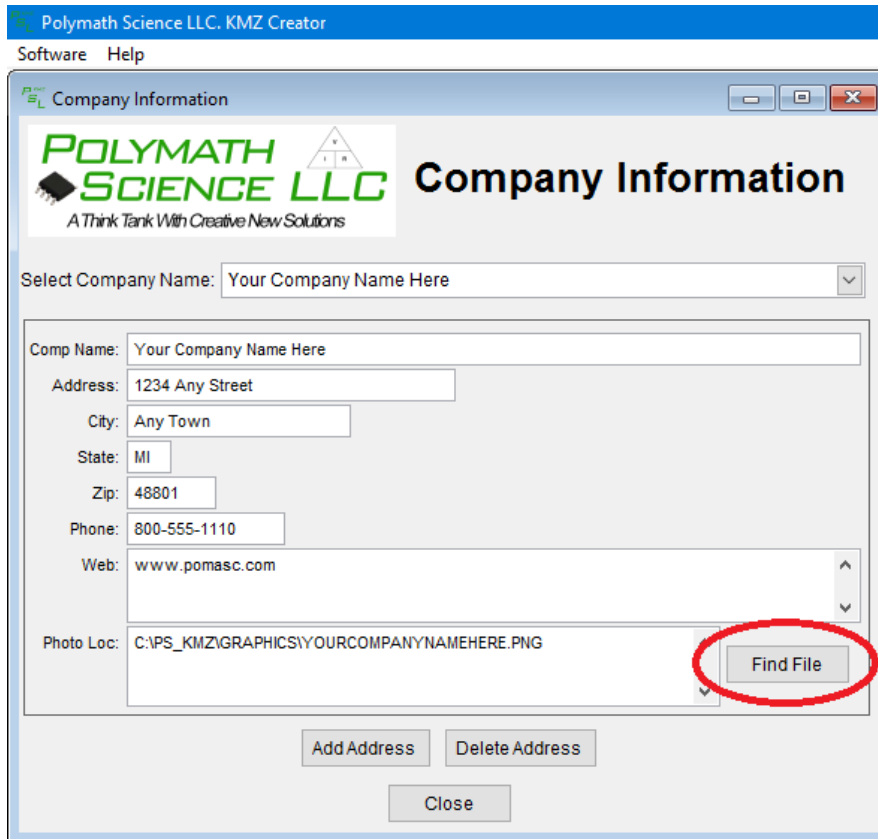


Fig. F6: Software – Find Company Image

When finished, select “Close” at the bottom of the menu.

Help

This section of the software will assist the user in running the software more efficiently and resolving possible problems. The first step in understanding the software is to read the Work Instructions.

Help

From the “Help” item at the top left of the screen select the menu entry labeled “Help – Work Instructions” as shown in fig. H1.

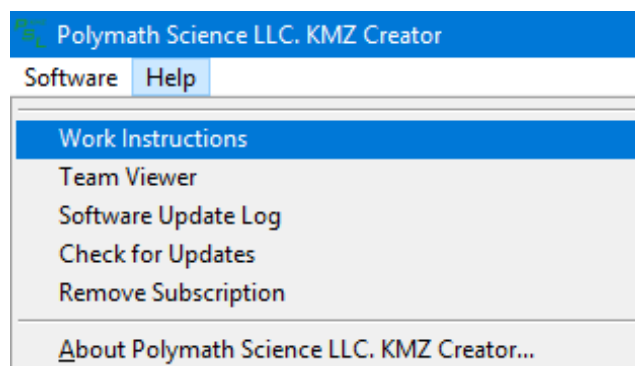


Fig. H1 Help Menu – Work Instructions

By Selecting “Help – Work Instructions” Menu Item, a new window will be opened with these instructions. These instructions have a linked table of contents. To jump to a specific area, locate the area of interest and click on the table of contents and it will jump to that location in this document.

Run TeamViewer

TeamViewer is a program that allows another person to see your computer for trouble shooting or training. Only a supervisor or the developers would run this program.

From the “Help” item at the top left of the screen select the menu entry labeled “TeamViewer” as shown in fig. H2.

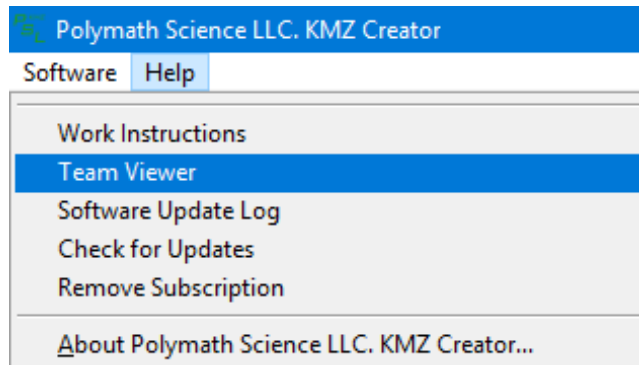


Fig. H2 Help Menu – Run TeamViewer

By Selecting “Team Viewer” Menu Item, a new window may be opened and ask to allow TeamViewer to make changes to the system. Select “Yes” and a screen similar to fig. H3 will appear.

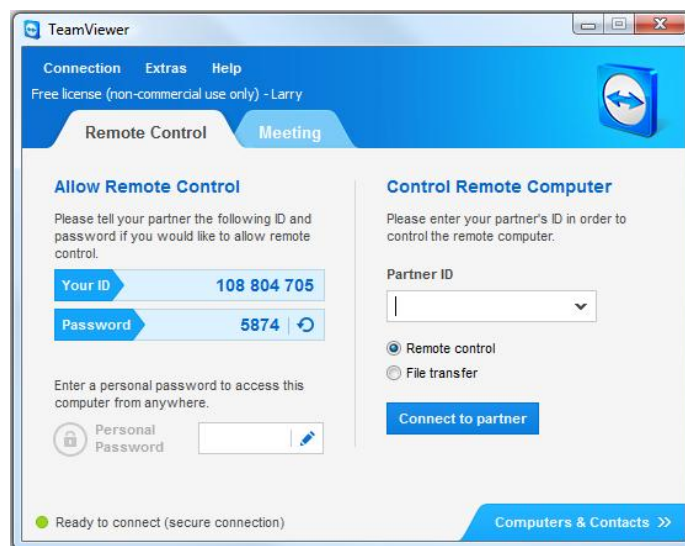


Fig. H3 TeamViewer

A supervisor or developer will then ask your ID and password to be able to see and control the computer.

Software Update Log

From the “Help” item at the top left of the screen select the menu entry labeled “Software Update Log” as shown in fig. H4.

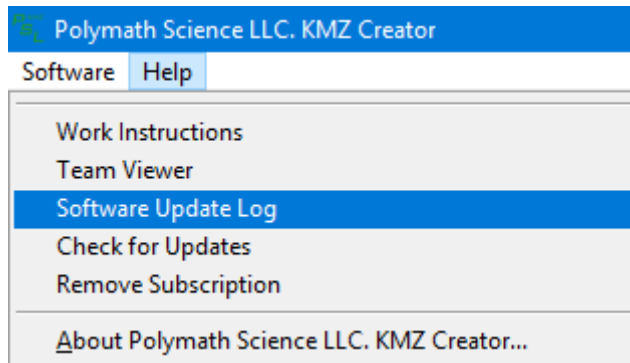


Fig. H4 Help Menu – Software Update Log

By Selecting “Software Update Log” Menu Item, a new window will be opened with a detailed history of all changes made to the software.

Check for Updates

Upon running the software, the user will be notified if there are available updates to be downloaded.

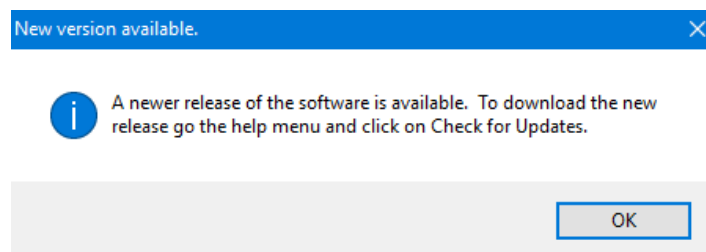


Fig. H5 Help Menu – Updates Available

In addition, software updates can be manually checked for through the “Check for Updates” menu option in the Help menu.

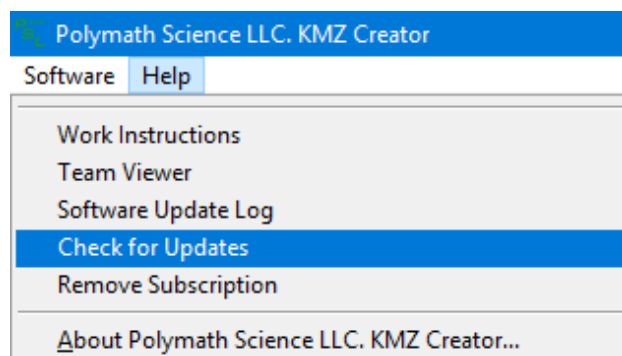


Fig. H6 Help Menu – Check for Updates Selection

When checking for updates, a prompt will be displayed that will show the current version installed and the latest version available for download. If a newer version is ready to be downloaded, the option to

“Download the Latest Version” will be available. Clicking this will launch the users default browser and download the latest version as an executable (.exe) file.

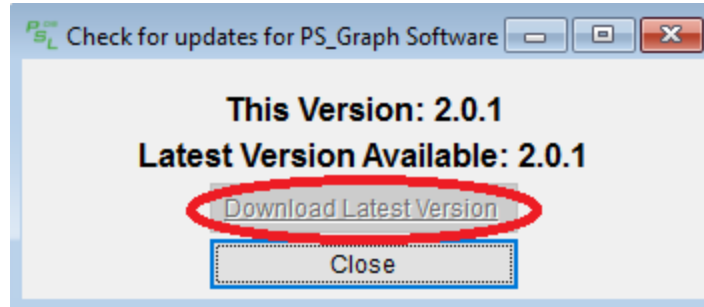


Fig. H7 Help Menu – Check for Updates Prompt

Removing Subscription

If you wish to remove the subscription, this can be done through the Help menu. Select Help, and click on “Remove Subscription”.

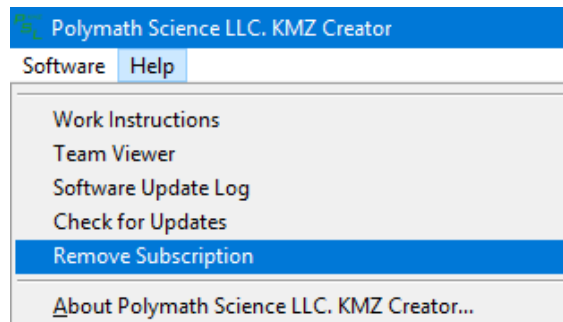


Fig H8: Remove Subscription

Clicking the “Remove Subscription” option will prompt the user to verify the removal of the subscription twice. Clicking “Yes” on both subsequent prompts will successfully remove the subscription.

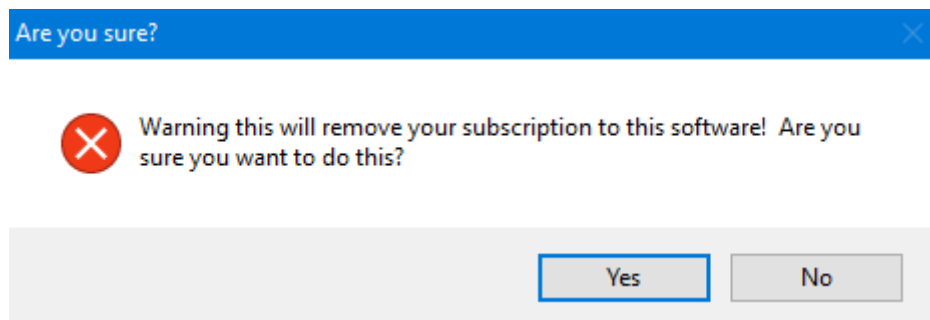


Fig H9: Subscription Removal Warning

Upon running the software again, a valid subscription number must be entered to continue as in Fig A2.

About Polymath Science KMZ Creator Software

From the “Help” item at the top left of the screen select the menu entry labeled “About Polymath Science LLC. KMZ Creator” as shown in fig. H10.

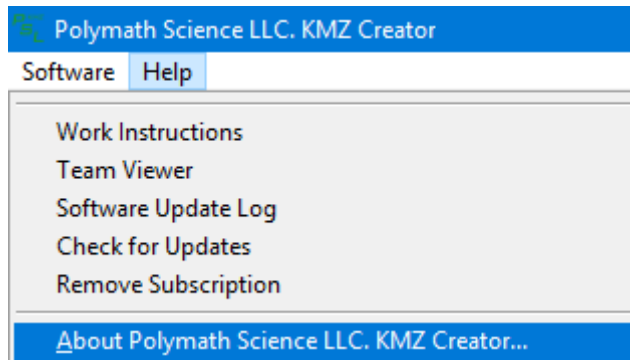


Fig. H10 Help Menu – About Selection

By selecting the “About Polymath Science LLC. KMZ Creator” menu Item, a new window will be opened displaying the current version of the software along with the last date it was updated.

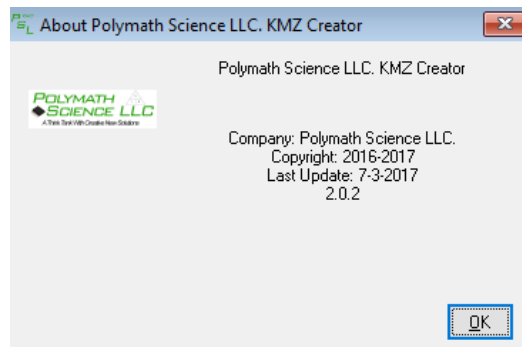


Fig. H11 Help Menu – About Polymath Science LLC. KMZ Creator

Troubleshooting

Updating Using Internet Explorer

If the default browser is internet explorer, the download will show as in figure T1. Select “Run” and follow prompts to install the update. The process for Google Chrome and FireFox follow.

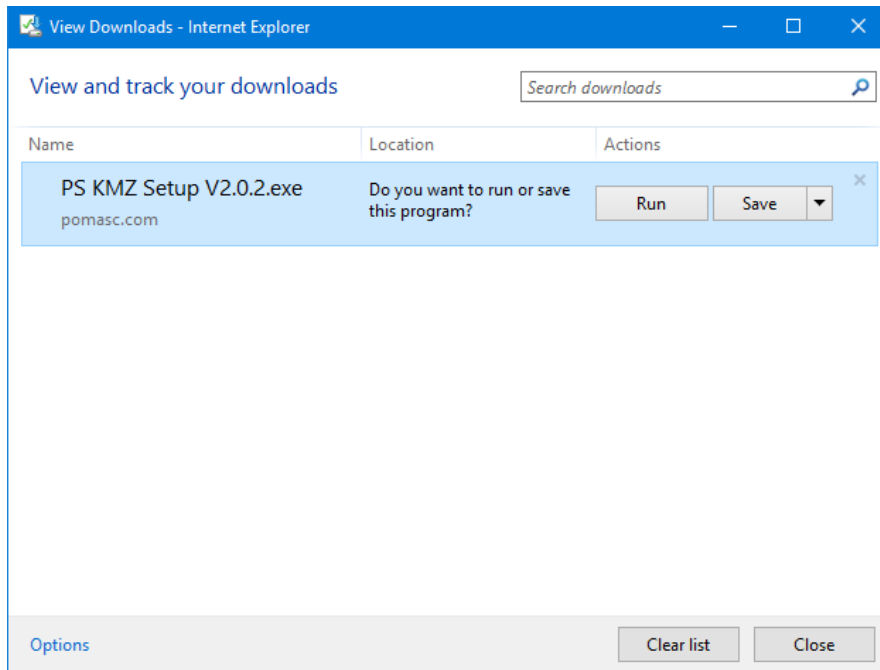


Fig. T1 Troubleshooting – Update Using Internet Explorer

Updating Using Microsoft Edge

If the default Browser is set to Microsoft Edge, after the Browser launches a window at the bottom of the screen will ask what to do with the file. Choose “Save” to save the file to your downloads folder.



Fig. T2 Troubleshooting – Saving Update Using Microsoft Edge

After saving the file, the user may see a warning. Choose to run the file and follow the prompts to complete the update process.

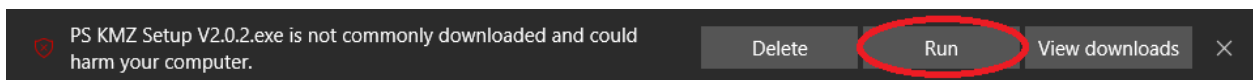


Fig. T3 Troubleshooting – Running the Update Using Microsoft Edge

Updating Using Google Chrome

If the default Browser is set to Google Chrome, the download will begin and be accessible through the “Downloads” menu option. To reach this, first click the triple vertical dots to access the menu, then click “Downloads” as outlined in figure T4.

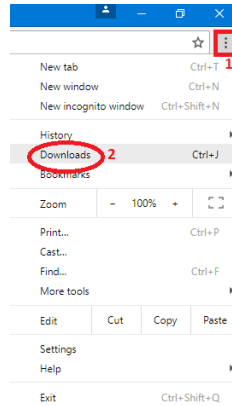


Fig. T4 Troubleshooting – Downloads Location for Google Chrome

Click on the file to run the executable file and follow prompts to complete the update.

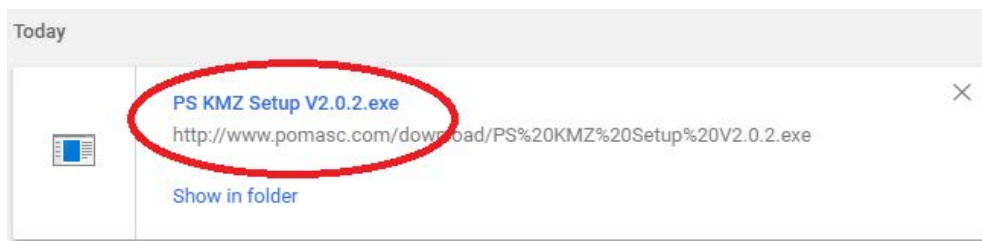


Fig. T5 Troubleshooting – Running the Update Using Google Chrome

Running the executable file will guide the user through the upgrade process.

Updating Using Mozilla FireFox

If Mozilla FireFox is set as the default Browser, you will be asked to save the file. Click “Save File” as shown in figure T6.

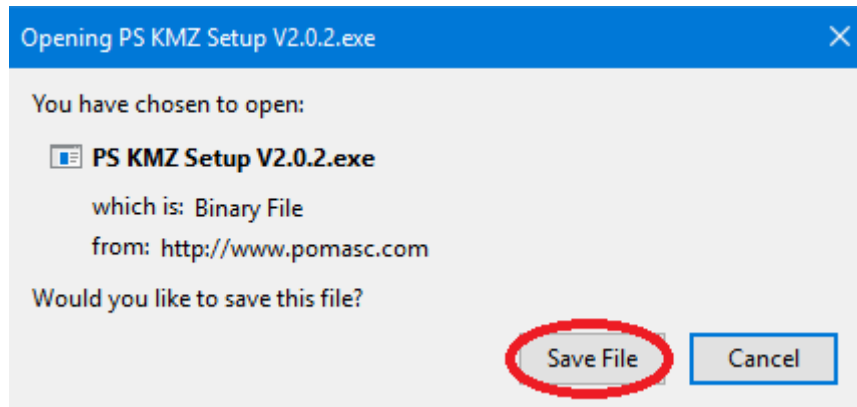


Fig. T6 Troubleshooting – Saving the Update Using Mozilla Firefox

After the file is saved, refer to figure T7 to locate it. Clicking the downward pointing arrow (1) located at the top right of the Browser screen will show the downloaded update (2). Clicking the executable file (2) will run the update. Follow prompts to complete the update process.

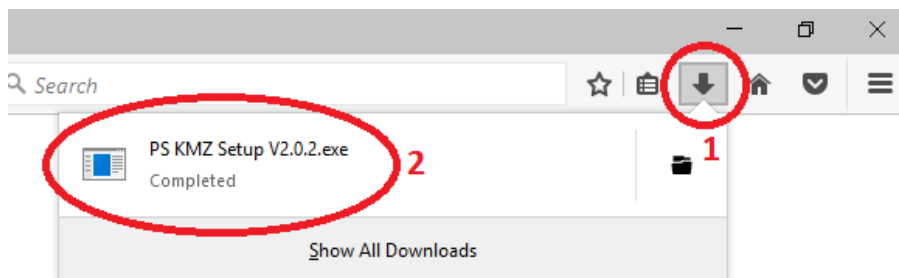


Fig. T7 Troubleshooting – Location of Downloads in Mozilla Firefox

Windows Protected Your PC Warning

During the update process, a warning may be displayed urging the user to view more information about the file and verify that you want to continue. This is to protect the user against accidental downloads or malicious software, and will display if Microsoft does not recognize the application. It is safe to continue with the installation of the KMZ Creator Software. Select “More info” to proceed.

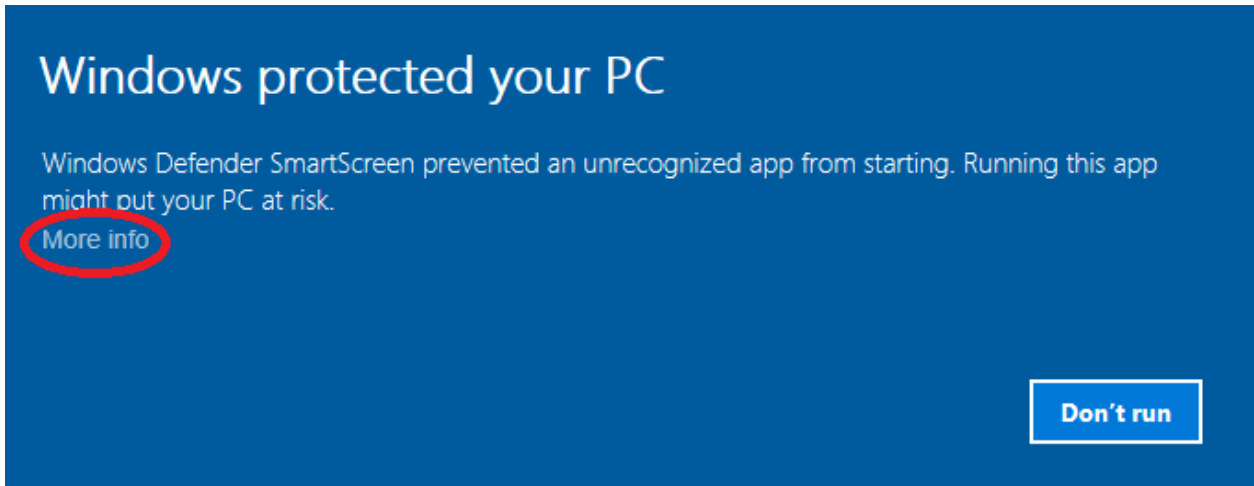


Fig. T8 Troubleshooting – Windows Warning

Proceed to click “Run anyway” and follow the prompts to complete the installation.

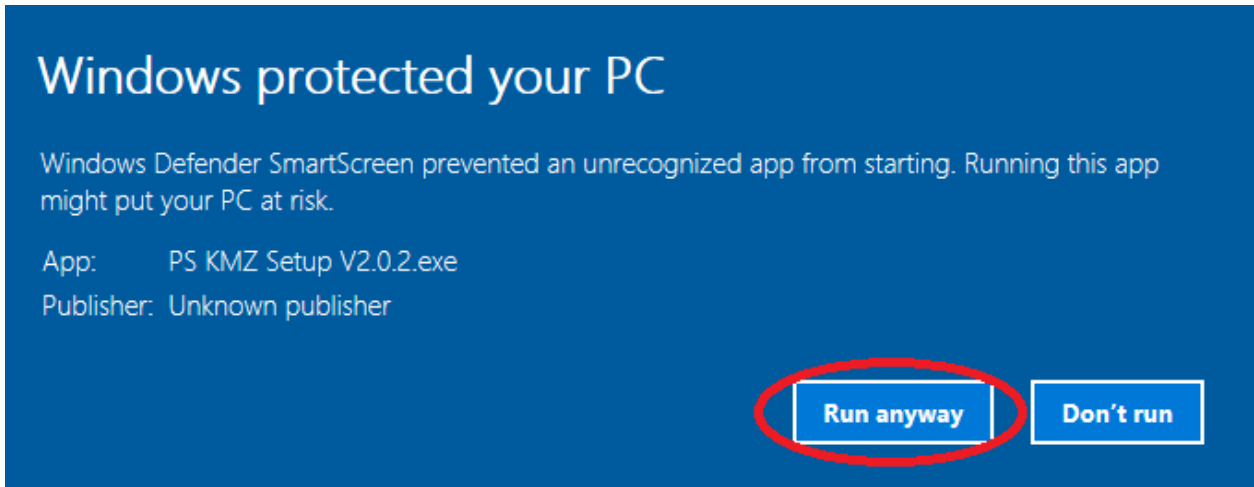


Fig. T9 Troubleshooting – Run Anyway

Software Requirements

Required Software:

Google Earth (Latest Version)

This software will run on Windows 7, Windows 8 and Windows 10.

If the computer can run the OS then it will have enough available RAM to run the software.

100 Megs of available hard drive space.